



ISSUE 1 | JANUARY 2020

Where WA community philanthropy is headed in 2021...

Welcome to the first monthly update for WA community philanthropy groups,

As fellow champions in the community sector in Western Australia, you may be interested in what each other are achieving in local communities around the state. On a monthly basis you will find news of what fellow WA Community groups are up to, a space to ask peers questions, links to useful resources, and communication updates.

As this is the first issue, any feedback on the content is very welcome.

Please contact me at clare@australiancommunityphilanthropy.org.au if you have any comments or suggestions.

Happy reading, and here's to a productive and joy-filled year!

Clare Gregory
WA Project Coordinator
M: 0466 122 317

WA GROUPS: NEWS AND UPDATES

Who's Who in the Zoo?

There are currently three operating Community Foundations in Western Australia.

1. [Albany Community Foundation](#)
2. [Denmark Community Foundation](#)
3. [Fremantle Foundation](#)

Peel Community Fund

A sub-fund of Fremantle Foundation, Peel Community Fund is in its initial stages of development.

Mount Burdett Esperance Community Foundation

Soon to be affiliate members of ACP, Mount Burdett Foundation, a Private Ancillary Fund (PAF), is headed up by local farmer Chris Reichstein (Founder) and Sarah Brown (Executive Officer).



Esperance AG Fund

Initiated in August 2020, a group of local farmers passionate about their community created the Esperance AG Fund. This group has made some great developments in starting up a Community-based initiative. Securing a \$10,000 grant from FRRR in December 2020 to put towards organisational capacity.

Esperance AG Fund is currently discussing options for legal and financial structures, exploring the options of a Sub-Fund or founding their own Community Foundation.

To download a full list of 'WA Group' peers and their roles go [here](#). Please email clare@australiancommunityphilanthropy.org.au to request direct contact details or to update information.

***Want to stay up to date with fellow CF's?
Sign up for their newsletters in the following ways;***

Albany Community Foundation - email donate@acfwa.com.au to sign up

Denmark Community Foundation - go [here](#) to subscribe

Fremantle Foundation - find FF newsletter archives [here](#)

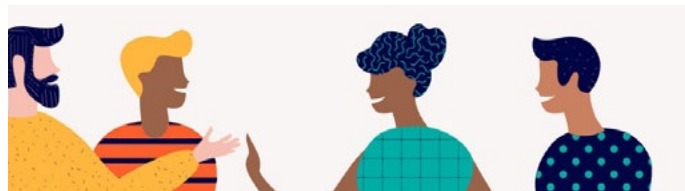


COMMUNICATIONS

Thank you to those who attended the first WA Groups Zoom meetup, and special thanks to Tae Wood from Albany Community Foundation for sharing your knowledge on some useful resources.

The next zoom meetup is scheduled for **January the 21st, 2021**. This will be an opportunity to meet and greet fellow community groups, reflect on 2020, and discuss aspirations for 2021.

Please go [here](#) to find links to the calendar invite and to register your interest in attending.



PEER TO PEER SUPPORT

Ask a question; share some of your best work or most useful resources to make life easier for others; invite feedback on something you are developing; or just check in with your network for some morale-boosting peer support.

Please email clare@australiancommunityphilanthropy.org.au to submit a question or request to your peers.



SHARED RESOURCES: LINKS AND UPDATES

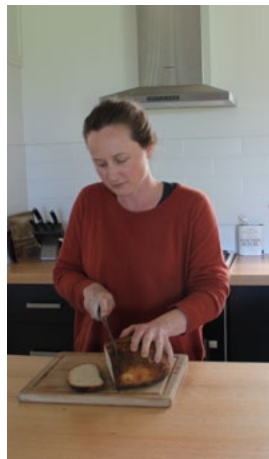
Switch from Dropbox to Google Drive

In partnership with Julie Rae at [Australian Communities Foundation](#), ACP has created [a shared resources folder in Google Drive](#) for use between ACP members nationally. As such, the shared WA Groups Dropbox Folder will be replaced by the national shared resources folder. Please feel free to add any relevant resources.

Development of ACP 'Members Hub'

ACP is excited to announce that we have secured funding to put towards the development of a 'Members Hub'. A one-stop-shop for ACP members to access practical tools and resources, links to videos and articles, discussion boards between members, and contact mentors and professional advisors in the sector.

This project is a priority for 2021, aiming to be launched mid-year with the help of a focus group of ACP members.



Chris Reichstein and Sarah Brown of Mount Burdett Esperance Community Foundation

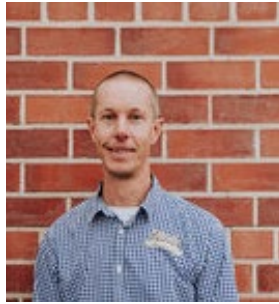


Esperance AG Fund, Initial meeting. August 5th, 2020

Albany Community Foundation



Jeremy Stewart
Vice Chair & Head
of Marketing



Tae Wood
Chair & Head of
Finance



Stacey Murnane
Media, Comms &
Events

Denmark Community Foundation



Dr Gill Sellar
Founding
Chairperson



Von Quinn
Secretary



Matt Sivyer
Director

Fremantle Foundation



Sue Stepatschuck
Executive Officer



Brooke Aslett
Grants & Admin
Manager

